



**REGIONAL SPECIALISED METEOROLOGICAL CENTRE-TROPICAL CYCLONES, NEW DELHI  
TROPICAL WEATHER OUTLOOK**

**DEMS-RSMC TROPICAL CYCLONES NEW DELHI DATED 13.07.2021**

**TROPICAL WEATHER OUTLOOK FOR NORTH INDIAN OCEAN (THE BAY OF BENGAL AND ARABIAN SEA) VALID FOR NEXT 120 HOURS ISSUED AT 0600 UTC OF 13.07.2021 BASED ON 0300 UTC OF 13.07.2021.**

**BAY OF BENGAL:**

YESTERDAY'S LOW PRESSURE AREA OVER WESTCENTRAL & ADJOINING NORTHWEST BAY OF BENGAL OFF NORTH ANDHRA PRADESH-SOUTH ODISHA COASTS PERSISTED OVER THE SAME REGION AT 0300 UTC OF TODAY, THE 13<sup>TH</sup> JULY 2021. THERE IS NO LIKELIHOOD OF IT'S INTENSIFICATION INTO A DEPRESSION. HENCE PROBABILITY OF CYCLOGENESIS IS NIL DURING NEXT 5 DAYS.

SCATTERED TO BROKEN LOW AND MEDIUM CLOUDS WITH EMBEDDED INTENSE TO VERY INTENSE CONVECTION OVER WESTCENTRAL AND ADJOINING SOUTHWEST BAY OF BENGAL. SCATTERED LOW AND MEDIUM CLOUDS WITH EMBEDDED MODERATE TO INTENSE CONVECTION OVER REST OF BAY OF BENGAL AND ANDAMAN SEA.

**PROBABILITY OF CYCLOGENESIS (FORMATION OF DEPRESSION) DURING NEXT 120 HRS):**

24 HOURS	24-48 HOURS	48-72 HOURS	72-96 HOURS	96-120 HOURS
NIL	NIL	NIL	NIL	NIL

**ARABIAN SEA:**

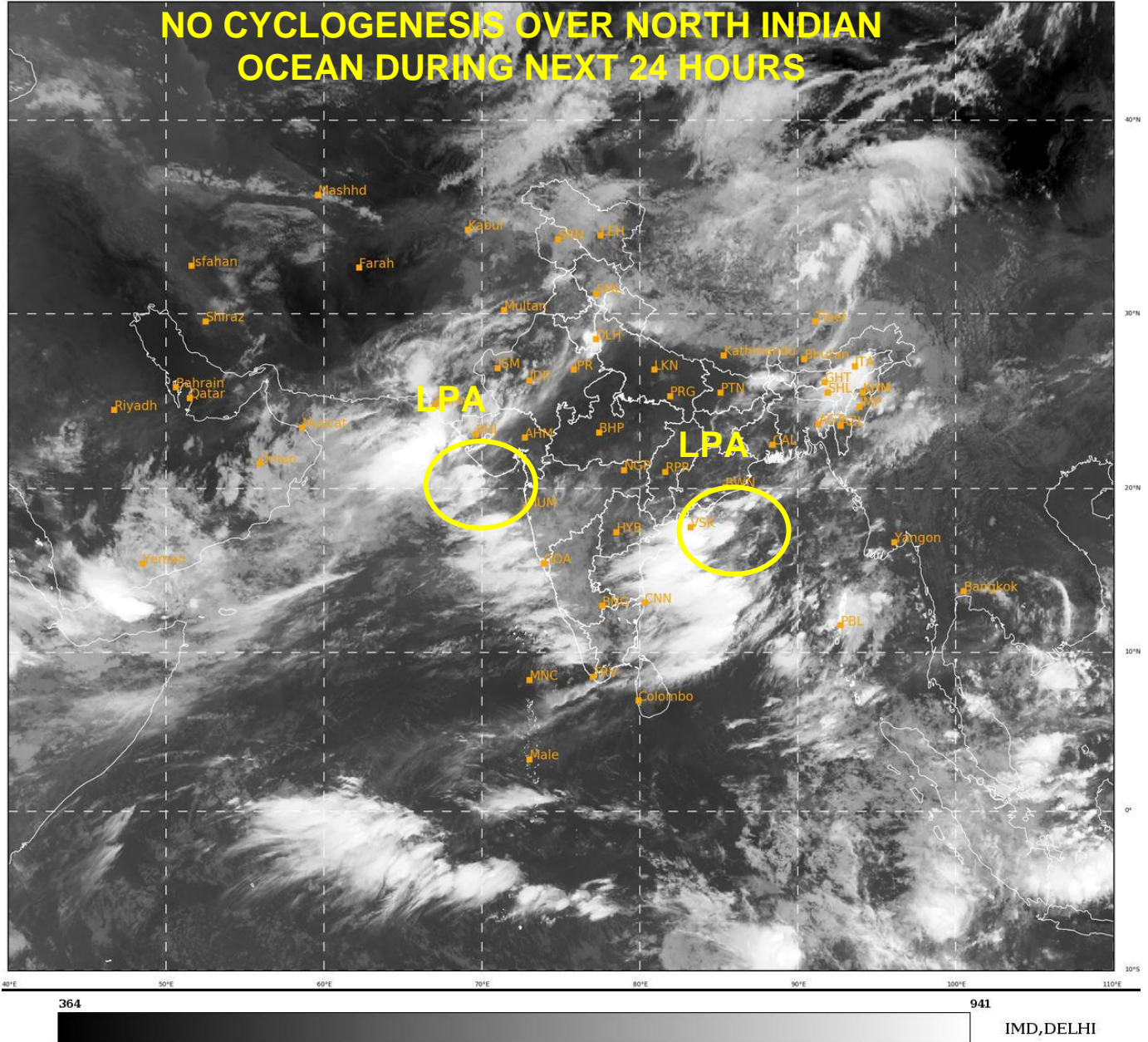
YESTERDAY'S LOW PRESSURE AREA OVER SOUTH GUJARAT & ADJOINING NORTHEAST ARABIAN SEA PERSISTED OVER THE SAME REGION AT 0300 UTC OF TODAY, THE 13<sup>TH</sup> JULY 2021. THERE IS NO LIKELIHOOD OF IT'S INTENSIFICATION INTO A DEPRESSION. HENCE PROBABILITY OF CYCLOGENESIS IS NIL DURING NEXT 5 DAYS.

SCATTERED LOW AND MEDIUM CLOUDS WITH EMBEDDED INTENSE TO VERY INTENSE CONVECTION OVER NORTH AND EASTCENTRAL ARABIAN SEA. SCATTERED LOW AND MEDIUM CLOUDS WITH MODERATE TO INTENSE CONVECTION OVER SOUTHEAST ARABIAN SEA. SCATTERED LOW AND MEDIUM CLOUDS WITH EMBEDDED WEAK TO MODERATE CONVECTION OVER WESTCENTRAL AND ADJOINING SOUTHWEST ARABIAN SEA.

**PROBABILITY OF CYCLOGENESIS (FORMATION OF DEPRESSION) DURING NEXT 120 HRS):**

24 HOURS	24-48 HOURS	48-72 HOURS	72-96 HOURS	96-120 HOURS
NIL	NIL	NIL	NIL	NIL

**REMARKS:** NIL



- LPA STANDS FOR LOW PRESSURE AREA